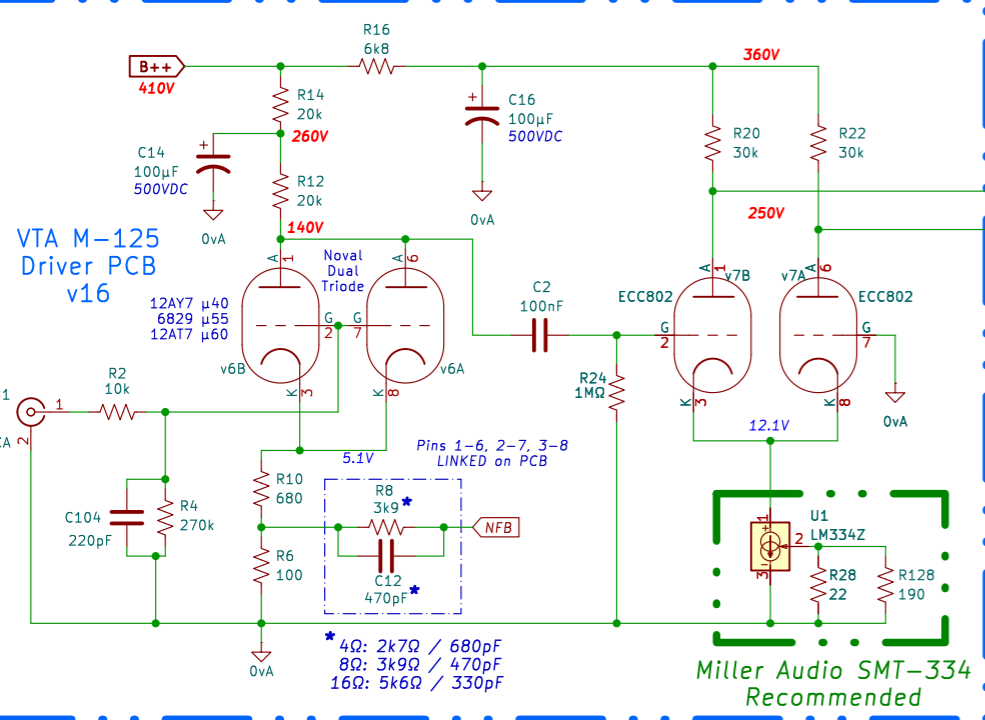
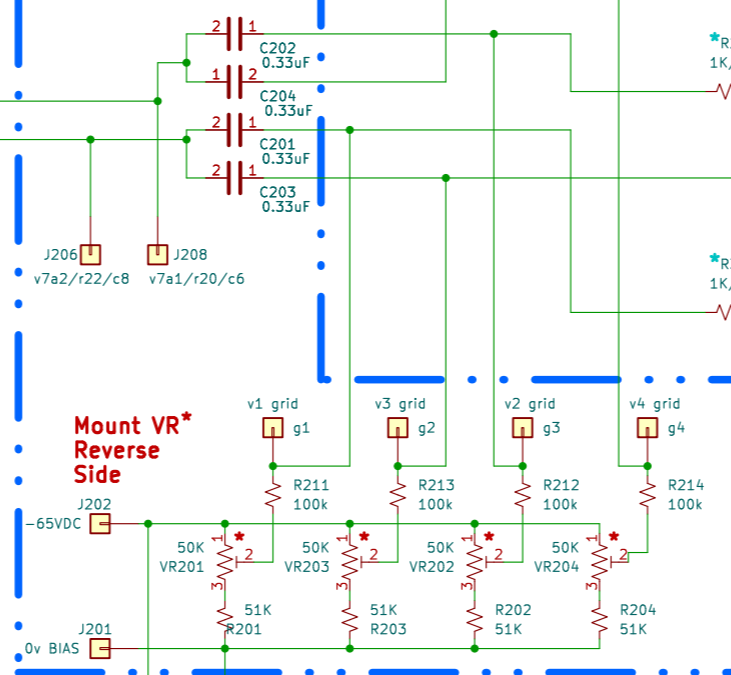


**VTA M-125 Driver PCB v16**



Mount VR\* Reverse Side

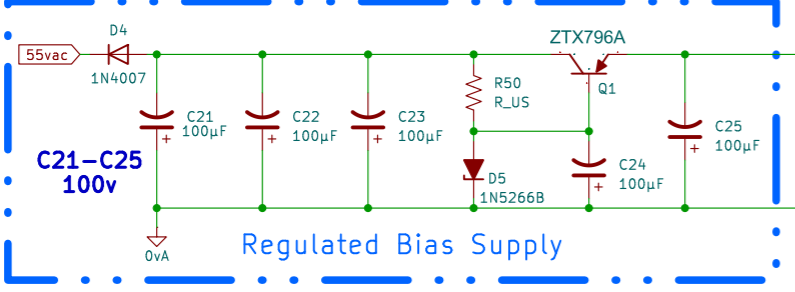


**Quad Bias Board**

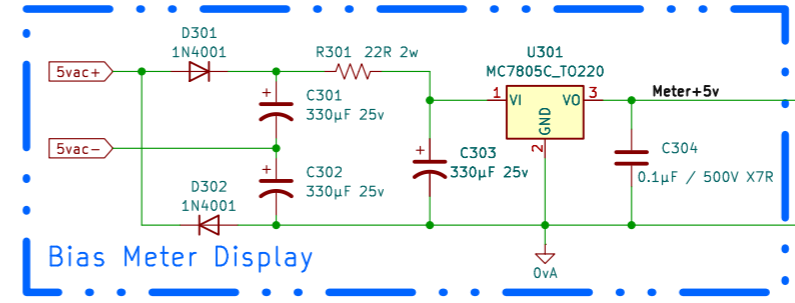
Mount Resistors on Ferrite above board

\* Change tap and feedback to match loudspeakers.

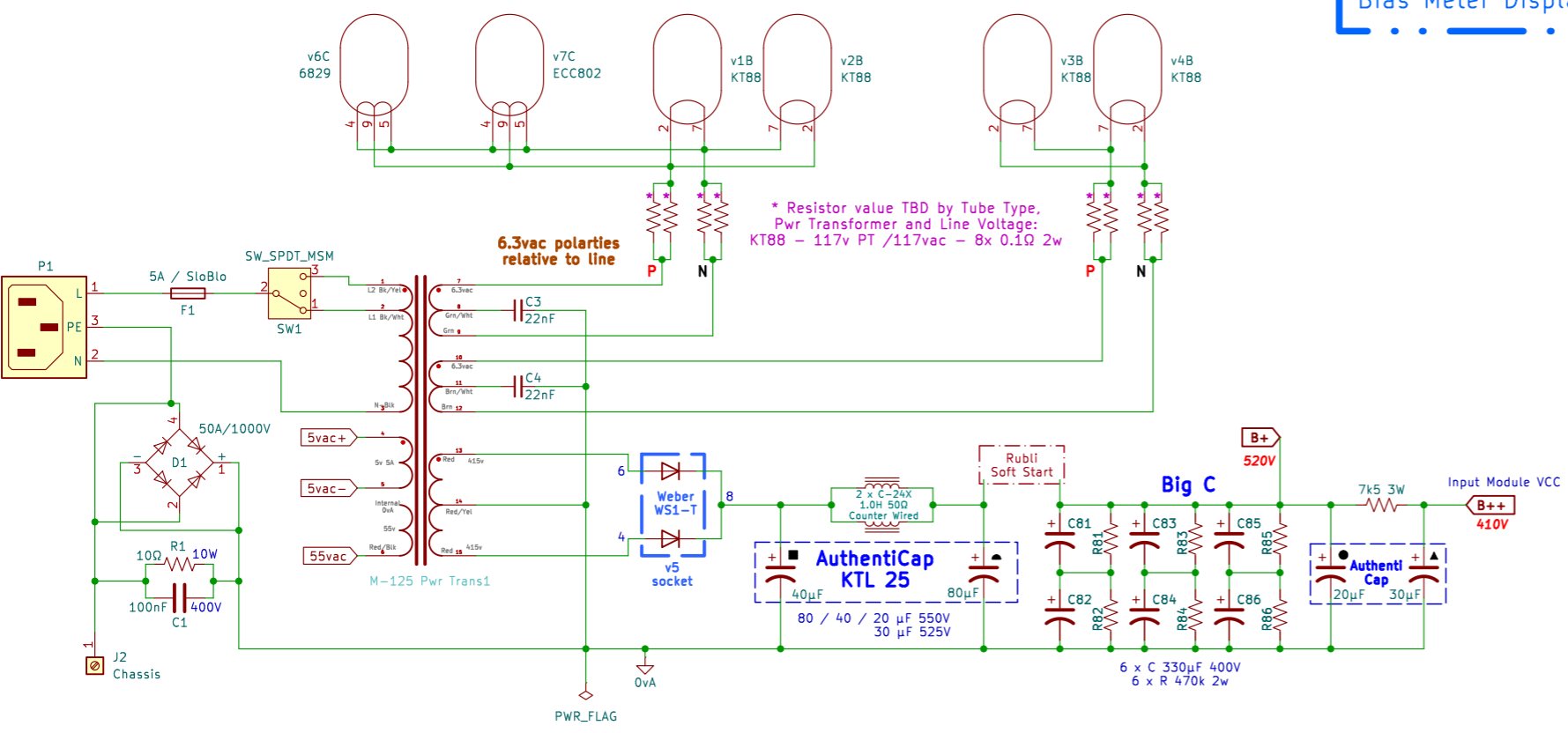
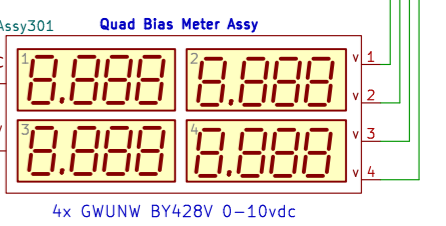
R1\* 47Ω 2w flameproof carbon film resistor wrapped w ≈ 20-30 turns of 28ga magnet wire. Solder to R leads



**Regulated Bias Supply**



**Bias Meter Display**



\* Resistor value TBD by Tube Type, Pwr Transformer and Line Voltage: KT88 - 117v PT /117vac - 8x 0.1Ω 2w

**ieLogical M-125**

Sheet: /	File: M-125_ieLogical.kicad_sch	Rev:
<b>Title:</b> M-125_ieLogical 2025	Date: 24-01-23	Id: 1/1
Size: A3	KiCad E.D.A. 8.0.8	